



pearson
ferrier®



14 EASTHAM AVENUE
Bury, BL9 5HL
Offers Over £180,000

14 EASTHAM AVENUE

Property at a glance

- BAY FRONTED SEMI DETACHED HOME
- THREE BEDROOMS (ONE FITTED)
- TWO RECEPTION ROOMS
- IMPROVEMENT WORKS REQUIRED
- DRIVEWAY, GARDENS & GARAGE
- POTENTIAL TO EXTEND (IF REQ & SUBJECT TO APPROVALS)
- CONVENTIONLA GAS CENTRAL HEATING
- POPULAR LOCATION

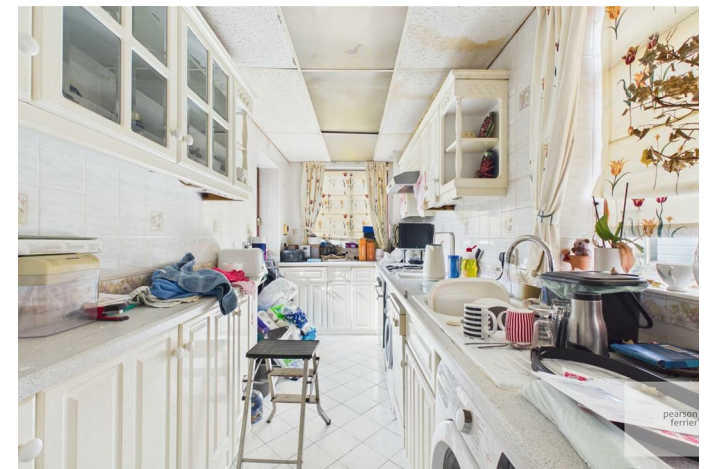
A traditional bay fronted semi detached home in a popular residential location just off Walmersley road approximately 1 mile from Bury town centre. The property does require some improvement works to bring up to current day standards but offers excellent potential to refurbish the accommodation to personal tastes. With conventional gas central heating, the accommodation briefly comprises: entrance hall, lounge, separate dining room, fitted kitchen with appliances, first floor landing, three bedrooms, bathroom and separate W.C. To the outside there are garden areas to the front and rear with a side driveway leading to the detached single garage. The property is being offered for sale with no onward chain.

Tenure - Leasehold with the residue of 999 yrs from 1943

Ground rent -tbc

Council Tax Banding - B

EPC Rating - tbc







Floor 0



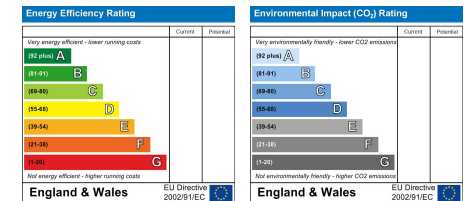
Floor 1

Approximate total area⁽¹⁾
75.3 m²

(1) Excluding balconies and terraces

Calculations reference the RICS IPMS 3C standard. Measurements are approximate and not to scale. This floor plan is intended for illustration only.

GIRAFFE360



Bury Office
435/7 Walmersley Road, Bury, Lancashire, BL9 5EU
Telephone: 0161 764 4440
Fax: #
Email: bury@pearsonferrier.co.uk

www.pearsonferrier.co.uk



All statements contained in these particulars are for indicative purposes only and are made without responsibility on the part of Pearson Ferrier and the vendors of this property and are not to be relied on as statements or representations of fact. Potential purchasers should satisfy themselves by inspection or otherwise as to the accuracy of such details contained in these particulars.